



Thank you for your cooperation and tolerance as our volunteers perform this important public service!

Ask me about the exact latitude, longitude and elevation of your Mark, and when it was installed!



Contact A Club Near You



[Facebook.com/uspowersquadrons](https://www.facebook.com/uspowersquadrons)  
[twitter.com/boatingisfun](https://twitter.com/boatingisfun)

United States Power Squadrons, Inc.  
 America's Boating Club  
 1504 Blue Ridge Road  
 Raleigh, NC 27607  
 888-367-8777

[contactme@hq.usps.org](mailto:contactme@hq.usps.org)  
[americasboatingclub.org](http://americasboatingclub.org)

America's Boating Club® is a registered trademark of United States Power Squadrons®



©United States Power Squadrons 2024



## Cooperative Charting Program



## Geodetic Survey Mark Recovery

**The USPS Triangle  
and Civic Service  
Activities**



- Public Boating Courses
- Vessel Safety Checks
- Waterway Clean-Ups
- Boat Shows
- Cooperative Charting

The Cooperative Charting Program is administered by the USPS Cooperative Charting Committee which oversees the updating of:

- Nautical Aids to Navigation (US Coast Guard and US Army Corps of Engineers)
- Marina Surveys (cruisersnet.net)
- Geodetic Mark Recovery (NOAA/NGS)

America's Boating Club members volunteer to report on the current condition and location of Navigational Aids (buoys, lights and bridges), Marinas and their facilities and land based Geodetic Survey Marks as a civic service to government agencies and our fellow members.

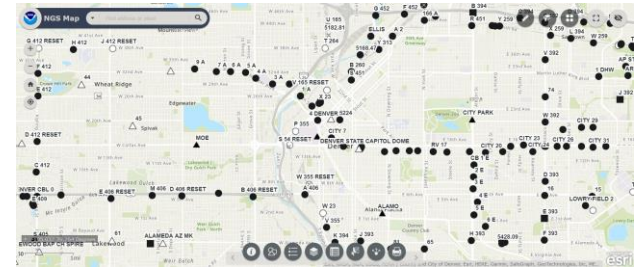


Geodetic markers are highly accurate surveying reference points established on the surface of the earth by local, state, and national agencies – mainly by the National Geodetic Survey (NGS). NGS maintains a database of all marks meeting certain criteria.

Geodetic survey markers are placed to establish “key permanent survey points” on the earth’s surface. Preservation of the markers is of utmost importance to users (surveyors, map makers, builders, engineers, and other professionals). Users need to know which marks are still viable, missing, or need maintenance. Many valuable geodetic marks are destroyed by construction, new roads, erosion, or for other causes.



Our volunteers use government maps to see which geodetic marks are in a particular area and then make a plan to locate them and take several photographs to document their condition and position.



<https://noaa.maps.arcgis.com>

Some of these survey marks (often a 3-inch metal disk) have been in place for many years and while many are along highways on public property, some are on private property (usually within municipal or utility easements). Oftentimes, there is a “Witness Post” nearby to alert professionals to their general location.



These detailed reports are submitted to the National Geodetic Survey – a department of the National Oceanic and Atmospheric Administration.